

Automatic pipetting workstation

SC9320

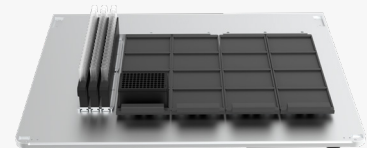


Product Features

The SC9320 workstation is a powerful experimental platform instead of a simple device. Considering the plate layout, the gripper selection, functional and pipetting modules connection, everything is up to you. Do whatever you want to meet your unique experimental needs.

Slide rail design for flexibility

Standard trays, various types of brackets and third-party customized trays can be quickly installed and replaced by universal sliding rails; It supports 12+4 plates layouts and is compatible with a variety of consumables, adapters and functional modules to achieve perfect integration.

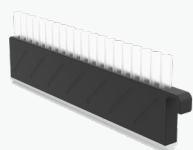


Intelligent wrench gripping for efficient integration

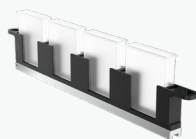
Mechanical gripping wrench and four-platen loading and unloading area are convenient to store consumables and, quickly transfer consumables to the pipette tips operation area by grasping the wrench; the table extension design supports the integration of third-party equipment to optimize space utilization.



Any combination



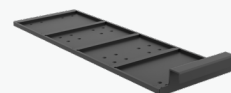
Reagent Racks



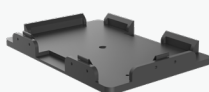
Reagent Tank Holder



Reagent Tube Adapter



Tray



Puncture Adaptor



Thermostatic Ibrate Module



Magnetic Module



Metal Bath Module

Specification

Instrument		SC9320 Automatic pipetting workstation		
Plate		12+4 plates, additional 18-well reagent tube racks		
Channel		8+8 / 96 Channels		
Pipetting technique		Air displacement		
Compatible		Most standard consumables (SBS plates standard)		
Core index	Range	Accuracy	CV	
	0.5 - 10 μ L	1 μ L \pm 8%; 10 μ L \pm 2%	1 μ L \leq 6%; 10 μ L \leq 1.5%	
	3 - 50 μ L	5 μ L \pm 4%; 50 μ L \pm 1.5%	5 μ L \leq 5%; 50 μ L \leq 1%	
	3 - 300 μ L	10 μ L \pm 4%; 200 μ L \pm 0.8%	10 μ L \leq 6%; 200 μ L \leq 0.5%	
		10 - 1000 μ L	10 μ L \pm 6%; 500 μ L \pm 0.5%	10 μ L \leq 5%; 500 μ L \leq 0.4%
Power requirement		Input voltage: 100-240vac \pm 10%, frequency: 50/60hz \pm 5%; output: 24V		
Maximum power		180W		
Working environment		5-40° C, 10-90% relative humidity, non-condensing		
Size		870 × 720 × 790mm		